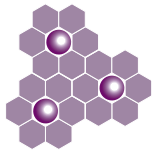


# Solutions

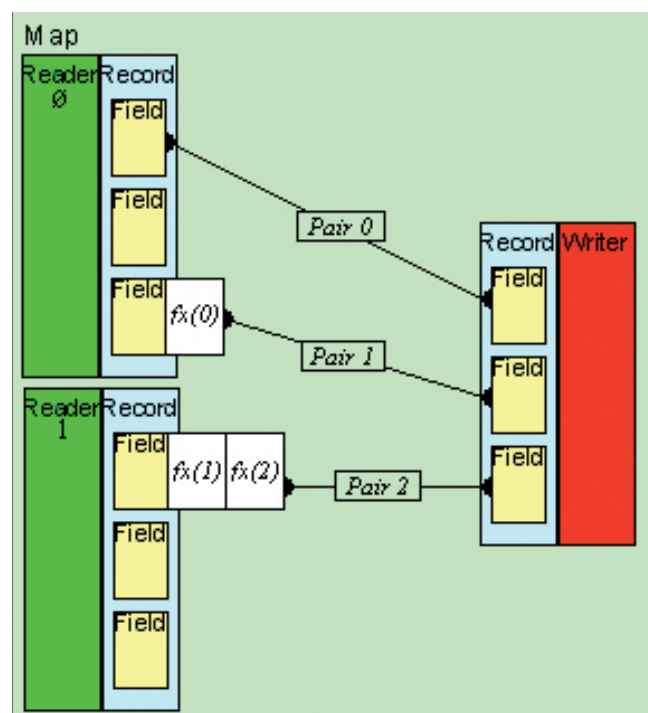


# Mebone ETL



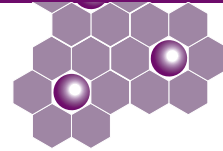
Mebone® is a solution developed by Evendor Engineering for Systems Integration and Process Migration related activities, with efficient extraction, transformation and data loading features.

Its efficacy in mapping processes, re-use of legacy corporate functions, and its high degree of flexibility allow maximum cost adjustment, rendering Mebone® one of the most competitive solutions on the market.

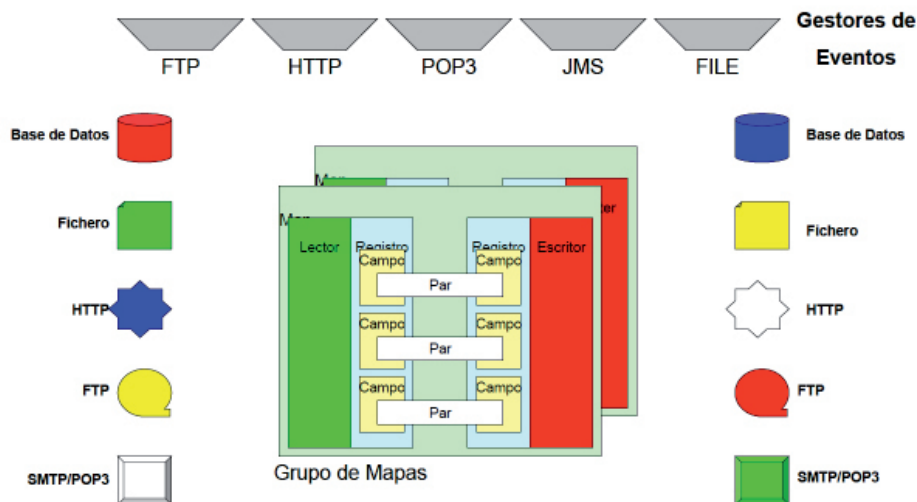


Mebone® enables optimized running costs in companies subjected to continuous data exchange processing with frequent format changes and the need for such data to reach many different locations, which implies multiple sources and destinations.

The battery of maps containing a set of pairings and transformations that can be grouped, in turn, as 'mapsets' and executed sequentially or in parallel, ensures high output capacity while providing the company with an initial draft data-flow design.

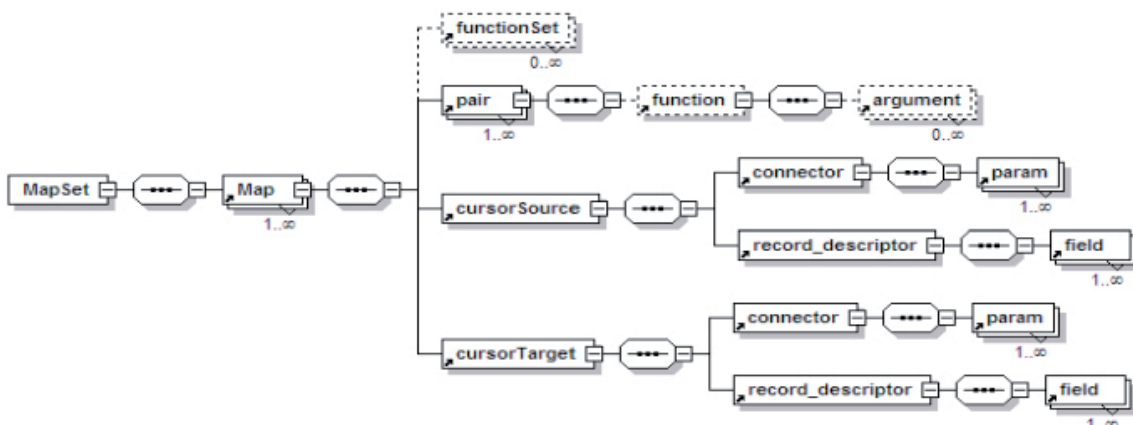


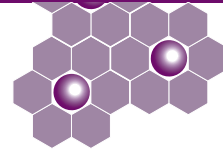
Mebone® performs as a multi-platform solution wherever there is an applications server able to run on the chosen hardware. Its modular, J2EE Standards compliant construction allows operations in parallel, the ideal solution in the case of large transaction volumes.



Mebone® is able to select different origin and destination types. The relevant connectors allow data extraction from database structures, fixed or variable length files, http chains, accessible remote ftp files and e-mails through a POP3 account. These data may be transformed and deposited at as many other destination types.

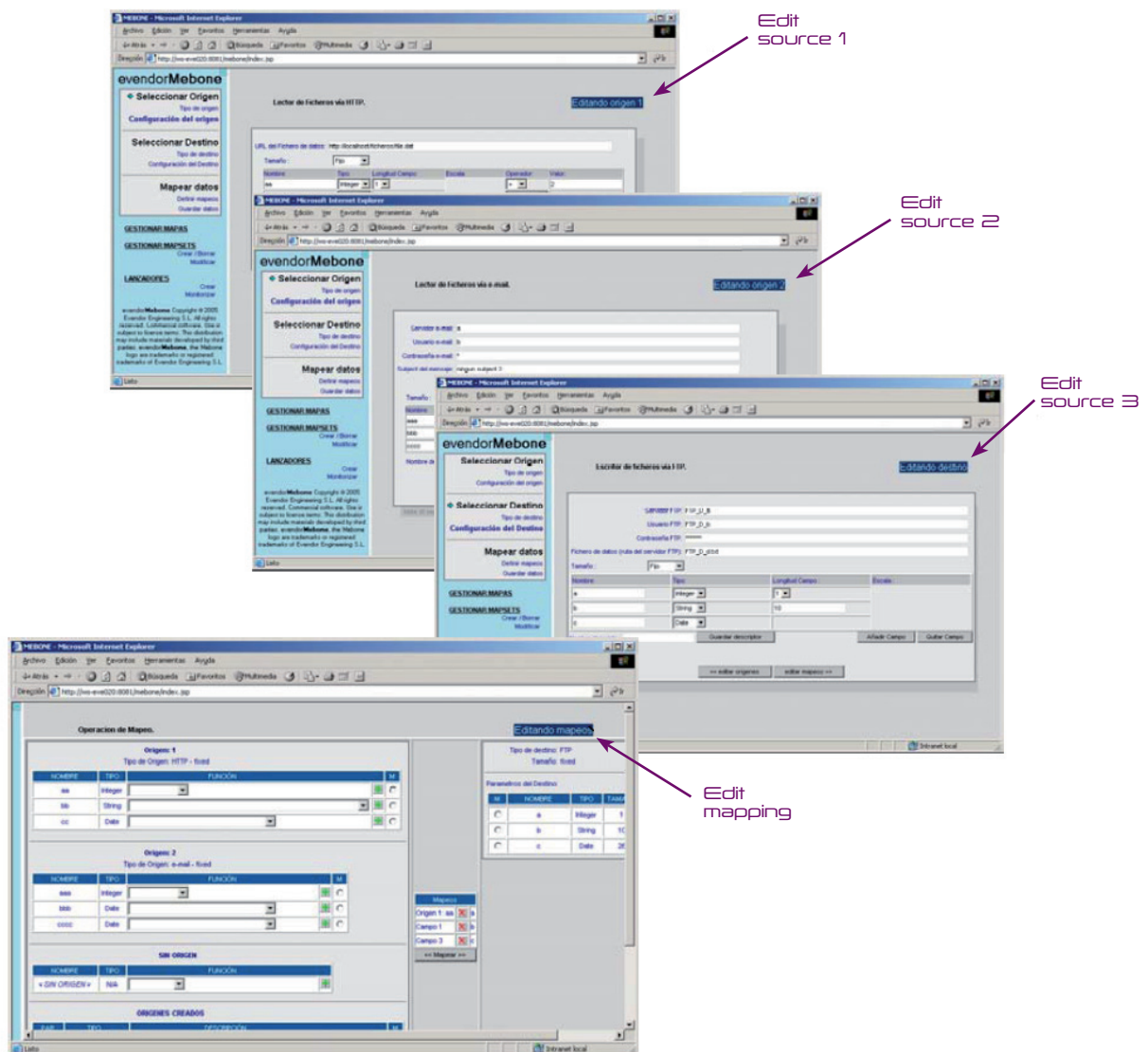
Data extraction, transformation and loading processes can be programmed, performed in response to events such as ftp, http, PP3, JMS or automatically triggered by the presence of a given file at a certain location. This is possible thanks to Event Managers integrated in its architecture.



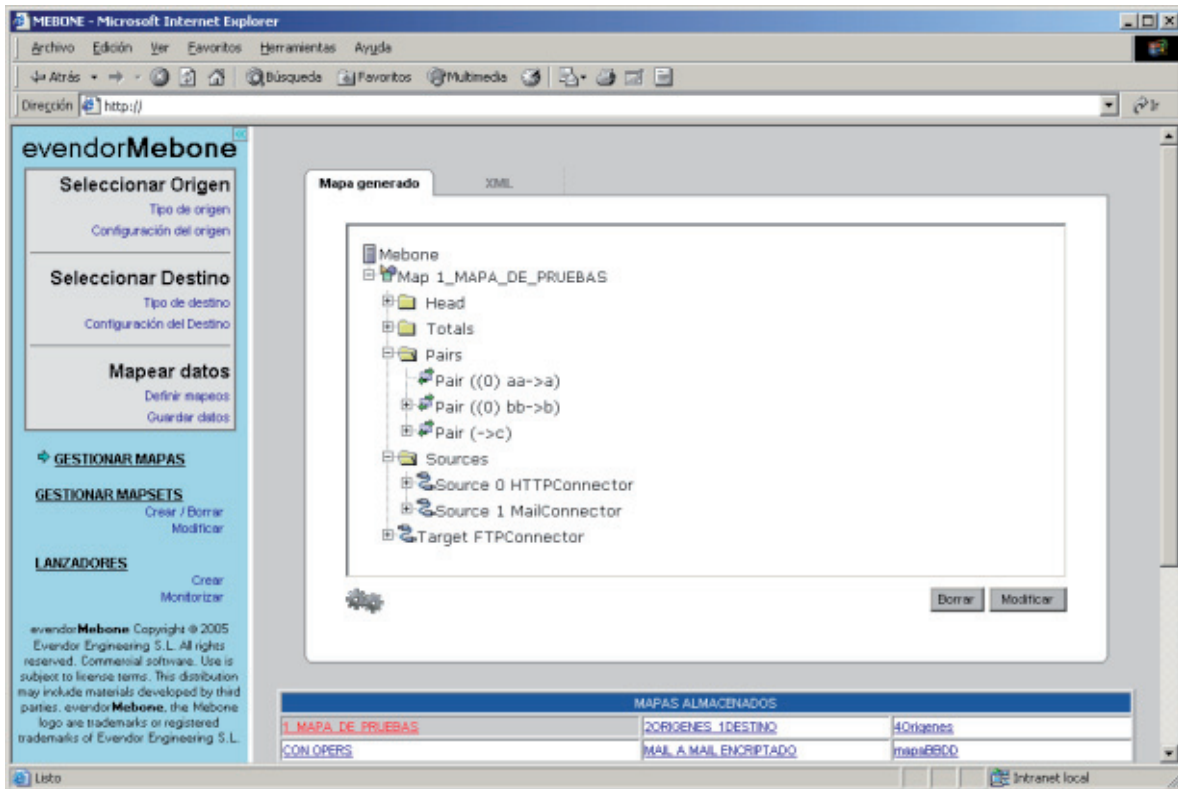
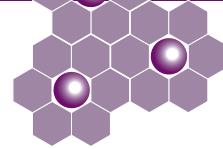


Facilities regarding total or partial storage of relational descriptors, maps, mapsets, and the capacity to handle any subsequent modifications, make up the bundle of functions available to the user.

Its user interface features a Wizard for the construction of maps or mapset, using a logical approach, providing configuration and execution tools for batch or online processing.



Mebone® includes a number of standard functions applicable to transformation processes. Additional functions from other applications or of a customised nature can be easily integrated, thus enhancing its potential and adaptability and making the investment worthwhile.



The maps in **Mebone**<sup>®</sup> are like Meccano strips: Individually or in assemblies, they allow complex processes of extraction, transformation and loading to be performed, and serve as integrating elements in system migration processes.

This solution opens up unlimited possibilities in the field of data management, structuring data flow and making heavy development costs unnecessary, with ensuing financial savings.